

TOWN&COUNTRY
ESTATES



3 Lakeside Court Heather Shaw, Trowbridge, , BA14 7DU

£1,200

LOCATION

The property is situated within easy reach of the town centre, walking distance to the local primary school, shops and bus routes. Trowbridge itself offers busy town centre shopping, cinema complex with restaurants and a train station with direct links to Bath, Bristol and beyond.

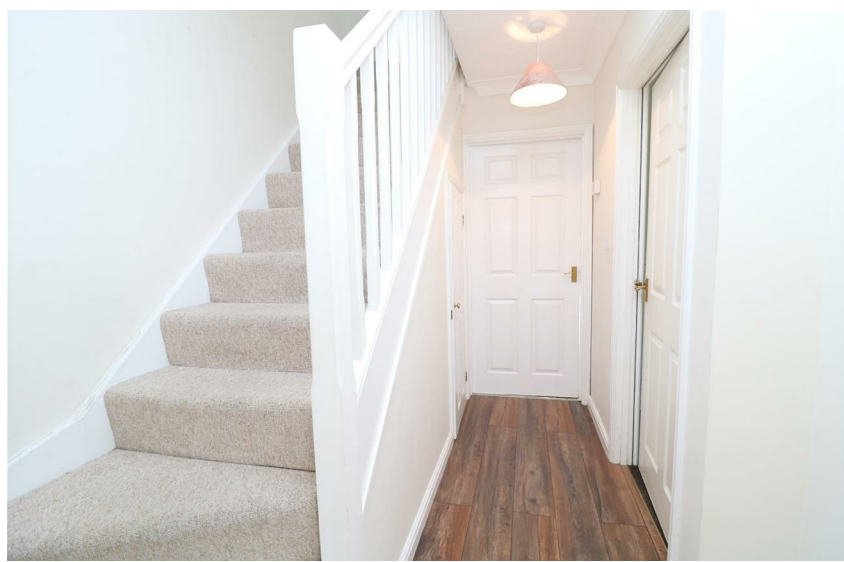
DESCRIPTION

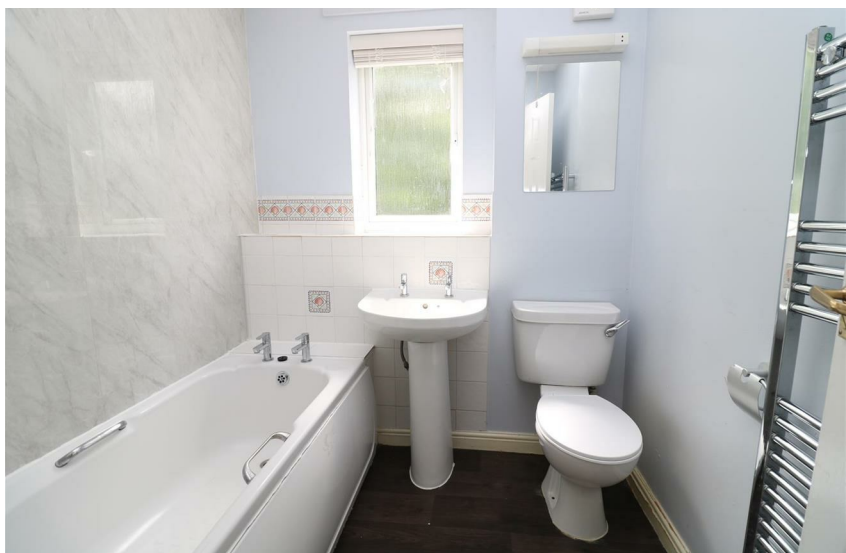
A very well presented three bedroom house set over three floors. The ground floor comprises an entrance hall, kitchen, lounge/diner and downstairs cloakroom. On the first floor you will find the second and third bedroom and family bathroom, and the master bedroom is located on the second floor. Further benefits include gas central heating, a good size rear garden and a parking space to the front.

ADDITIONAL INFORMATION

Council tax band - A

EPC - C









TROWBRIDGE OFFICE
9 Fore Street, Trowbridge,
Wiltshire BA14 8HD

WESTBURY OFFICE
16 High Street, Westbury,
Wiltshire BA13 3BW

Teleph one: 01 225 7 766 99
Email: trowbridge@townandcountryestates.com

Telephone: 0 137 3 8244 44
Email: westbury@townandcountryestates.com

www.townandcountryestates.com

SALES & MORTGAGES & LETTINGS

TOWN & COUNTRY MORTGAGES

FEE FREE Mortgage Services

- RE-MORTGAGES
- FIRST TIME BUYER
- HOME MOVER
- BUY TO LET



YOUR PROPERTY MAY BE REPOSSESSED IF YOU DO NOT
KEEP UP REPAYMENTS ON YOUR MORTGAGE

OFFICE, HOME AND TELEPHONE
APPOINTMENTS AVAILABLE

CONTACT US ON:
01225 776699

BOOK ONLINE:
www.townandcountrymortgages.net

FIND US ON  

OLIVER BROWNING
Managing Director

NB. Town and Country Estates have not tested any equipment, fixtures, fittings or services and cannot guarantee that they are in working order. Buyers are advised to seek professional advice from their solicitors or surveyor. Internal measurements should not be relied upon for fitting of carpets or furniture without checking. These details have been prepared in good faith and whilst believed to be correct give notice that none of the statements are to be relied upon as statements or representations of fact. Some statements are inevitably subjective and are therefore the view of the author at the time the information was prepared. If any items are particularly important to you then please check with this office first, especially if travelling some distance to view.